



B.K. BIRLA CENTRE FOR EDUCATION

SARALA BIRLA GROUP OF SCHOOLS
A CBSE DAY-CUM-BOYS' RESIDENTIAL SCHOOL

ANNUAL EXAMINATION (2025-26)

MATHEMATICS

Class: VI

Date: 21.03.26

Admission no:

Set-1

Time: 3 hrs.

Max Marks: 80

Roll no:



General Instructions:

- This question paper consists of FIVE sections
- All answers must be correctly numbered as in the question paper and written in the answer sheet.
- Write neatly and draw diagrams wherever necessary.

Section A

Choose the correct answer

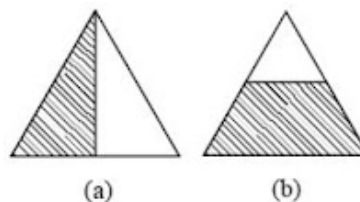
1 x 20 = 20

1. What is the measure of each angle in a square?
(a) 45° (b) 60° (c) 90° (d) 120°
 2. When drawing a rectangle, which of the following is true about its diagonals?
(a) They are always parallel. (b) They bisect each other at 90° .
(c) They are equal in length. (d) both the option (b) and (c)
- 
3. A simple closed curve all of whose points are at the same distance from a fixed point is _____
(a) Radius (b) Circle (c) Square (d) Rectangle
 4. An angle of exactly 90° is called a _____ angle.
(a) Straight (b) Obtuse (c) Acute (d) Right
 5. In a bar graph, each bar (rectangle) represents only _____ value of the numerical data.
(a) Four (b) Three (c) Two (d) one
- 
6. A square has rotational symmetry of order _____.
(a) 3 (b) 2 (c) 4 (d) 6
 7. If length and breadth of rectangle are doubled then its area will be _____.
(a) same (b) triple (c) half (d) double
 8. The perimeter of a regular hexagon of side 8 cm is _____.
(a) 32 cm (b) 40 cm (c) 48 cm (d) 64 cm

9. The perimeter of a triangle with sides 12 cm, 8 cm, and 7 cm is _____
(a) 27 cm (b) 54 cm (c) 81 cm (d) 108 cm

10. A number representing a part of a _____ is called a fraction.
(a) Whole (b) part (c) fraction (d) all of these

11. Which of the following represents $\frac{1}{2}$?

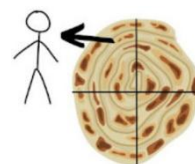


- (a) Only figure (a) (b) Only figure (b)
(c) Both figures (a) and (b) (d) Neither figure (a) nor figure (b)

12. A rectangle has _____ lines of symmetry.

- (a) 3 (b) 2 (c) 4 (d) 6

13. When 4 children share 1 roti equally, each child gets _____ roti.
(a) $\frac{1}{4}$ (b) $\frac{1}{2}$ (c) $\frac{1}{3}$ (d) 1



14. In which of the following pairs of integers, the first integer is not on the left of the other integer on the number line?

- (a) (-1, 10) (b) (-3, -5) (c) (-5, -3) (d) (-6, 0)

15. If you move 7 steps to the left from +2 on a number line, where will you end up?

- (a) -5 (b) 5 (c) 9 (d) -9

16. The integer -2 lies _____

- (a) to the left of -3 (b) to the right of -1
(c) to the left of -1 (d) between -1 and 0

17. How many lines of symmetry does a regular hexagon have?

- (a) 4 (b) 6 (c) 8 (d) 2

18. Which of the following shows the maximum rise in temperature?

- (a) 0°C to 10°C (b) -4°C to 8°C
(c) -15°C to -8°C (d) -7°C to 0°

19. Assertion (A) : A square can be thought of as a special rectangle.

Reason (R) : A rectangle with all sides equal becomes a square.

- (a) Both A and R are true, and R is the correct explanation of A.
(b) Both A and R are true, but R is not the correct explanation of A.
(c) A is true, but R is false.
(d) A is false, but R is true.

20. Assertion (A) : $(+ 1) + (+ 2) = 3$

Reason (R) : The addition is taking two or more than two numbers and adding

- (a) Both A and R are true, and R is the correct explanation of A.
- (b) Both A and R are true, but R is not the correct explanation of A.
- (c) A is true, but R is false.
- (d) A is false, but R is true.

Section B

Do as directed

2 x 5 = 10

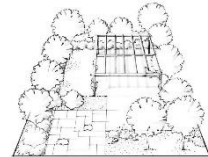
21. Draw a circle of radius 3.2 cm.

22. Shabana wants to put a lace border all around a rectangular table cover 3 m long and 2 m wide. Find the length of the lace required by Shabana.



or

A rectangular garden has a length of 8 m and a breadth of 5 m.
Find the area of the garden



23. Locate the integer on the number line that is:

- (a) $(-1) - 4$
- (b) $(-2) + 5$

24. Compare the following fractions and justify your answers:

(a) $\frac{7}{4}$ $\frac{7}{3}$ (b) $\frac{9}{11}$ $\frac{5}{11}$

or

Find 4 equivalent fraction to $\frac{3}{5}$

25. Draw an acute angle and label it as $\angle XYZ$.

Section C

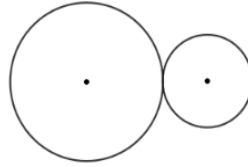
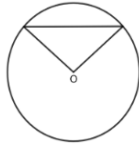
Solve the following

3 x 6 = 18

26. Construct a rectangle with sides 5 cm and 7 cm. Verify if the diagonals are equal.

27. Suppose you start with `0 in your bank account, and then you have debits of ₹ 1, 2, 4, 8, 16, 32, 64, and 128, and then a single credit of ₹ 256. What is your bank account balance now?

28. Draw the line (s) of symmetry for each of the following figures



29. Reduce to the simplest form:

(a) $\frac{150}{60}$ (b) $\frac{36}{72}$ (c) $\frac{5}{25}$

or

Riya ate $\frac{3}{8}$ of a chocolate and her brother ate $\frac{2}{3}$ of the same chocolate.

How much chocolate did they eat in total?

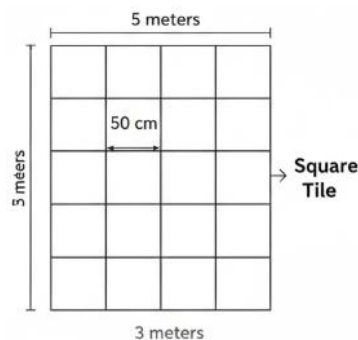
30. A farmer owns a fruit/flower yard and the pictograph shows different kinds of fruit trees in his fruit yard. Observe the pictograph and answer the following questions:

- Which fruit tree is maximum in number at the fruit yard?
- How many more coconut trees are there than rose trees?
- How many different varieties of trees are available at the yard?

Mango trees	
Banana trees	
Rose trees	
Coconut trees	
Grapes trees	

31. A rectangular room has dimensions 5 meters by 3 meters. Square tiles with a side length of 50 centimetres are to be used to pave the entire floor.

- Determine the number of tiles required to cover the floor completely.
- Calculate the total cost of tiling if each tile costs ₹395.



or

Perimeter of a square and a rectangle is same. If a side of the square is 15 cm and one side of the rectangle is 18cm, find the area of the rectangle.

Section D

Do as directed

$$5 \times 4 = 20$$

32. Complete the grid to make the required border sums:

6	8	
		-5
	-2	

or

Border sum is -2

A school has steps. A girl is sitting on the topmost step (which is the first step). The girl is present at the tenth step. She jumps three steps down the stairs and then successively jumps back two steps upwards. In how many jumps will the girl reach the ground?



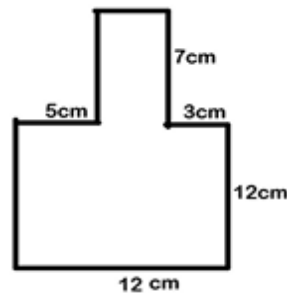
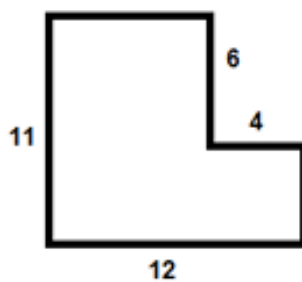
33. Construction:

Draw a perpendicular line from the midpoint of line segment of 6 cm
Name the angle formed between the two-line segments?

or

Can we construct parallel lines using ruler prove it. Name the angle formed between the two-line segments?

34. Find the area of the following irregular shapes.



35. Complete the addition subtraction box.

	(+)		
	$\frac{4}{5}$	$\frac{3}{5}$	
(-)	$\frac{2}{5}$	$\frac{1}{5}$	(-)
	(+)		

Section E

Solve the following

4 x 3 = 12

36. A boy is learning geometrical constructions in class and is asked to construct a rectangle using a ruler and compass. The given information is as follows: One side of the rectangle measures 6 cm. The length of the diagonal of the rectangle is 9 cm.

The boy carefully follows the steps of construction to draw the required rectangle. Help the boy for the construction

37. Five students of class VI sold tickets of the school fair:

Name	Rohan	Priya	Nikhil	Reshma	Arjun	Mahesh
No. of tickets sold	15	7	10	15	8	5

Draw a bar graph to represent the given information.

38. Radha and her three cousins visited a fair. They bought a large rectangular chikki and decided to share it equally. The shopkeeper cut the chikki into 12 equal parts, similar to the chikki division. Radha ate 3 parts, while each cousin ate 2 parts. After eating, they compared how much each one had eaten and tried converting their shares into fractional units. Radha wanted to know if she ate more than each cousin and if her share could be written in lowest terms. They also wanted to show their shares on a number line. Subtract the following fraction. Can you express the result as a mixed fraction? Why



Based on the above, answer the following questions:

- Fraction of chikki Radha ate.
- Fraction each cousin ate.
- Who ate more?
- Express Radha's fraction in lowest terms and mark on a number line.

ALL THE BEST